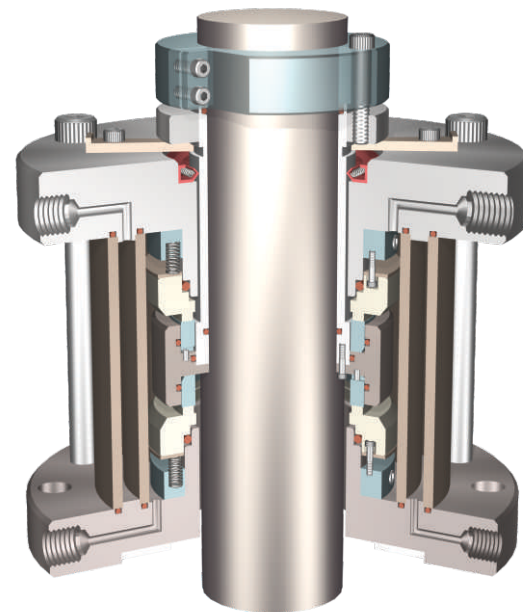


DHPDB DOUBLE DUAL BALANCED HEAVY DUTY CARTRIDGE SEAL

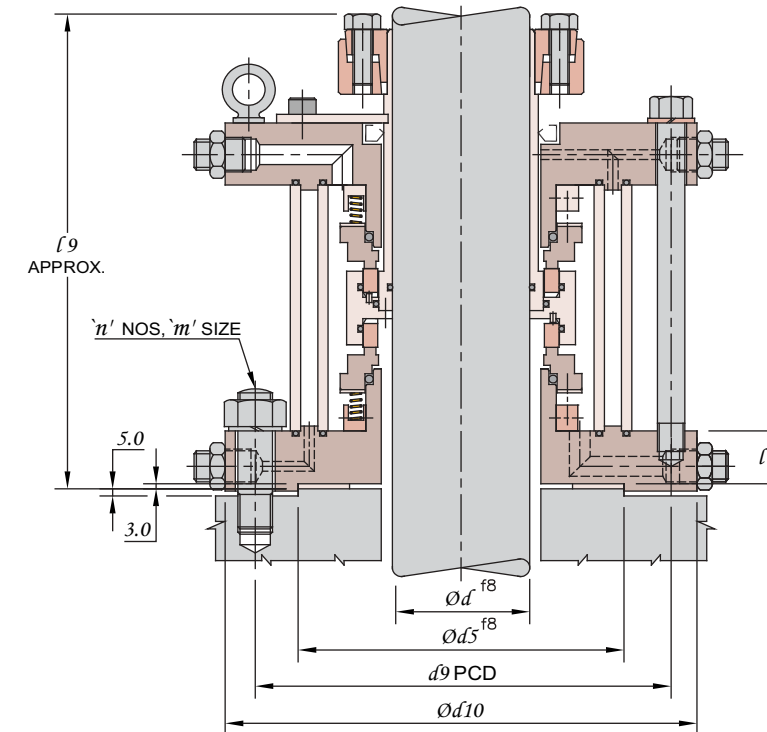
- STATIONARY SPRING DESIGN FOR HIGH SPEED
- MINIMUM FRETTING & VIBRATIONS
- INDEPENDENT OF PAD FLANGE SQUARENESS AND THERMAL DISTORTIONS OF THE EQUIPMENT
- DUAL BALANCED HEAVY DUTY SEAL WITH AUTO-REVERSAL FOR MAXIMUM SAFETY
- TORQUE TRANSMISSION WITH SHRINK DISC (OPTIONAL)
- SPLIT CLAMPING AVOIDS SHAFT DAMAGE (OPTIONAL)



APPLICATIONS :

- GAS INDUCTION REACTORS
- HIGH SPEED HIGH PRESSURE AUTOCLAVES

INSTALLATION DIMENSIONS



SIZE CODE	d	$d5$	$d9$ PCD	$d10$	$l2$	$l9$	m	n
0400	40.0	155.0	195.0	220.0	30.0	245.0	M16	8
0500	50.0	160.0	200.0	220.0	30.0	280.0	M12	8
0600	60.0	170.0	210.0	240.0	30.0	285.0	M16	8
0700	70.0	190.0	240.0	275.0	31.0	285.0	M20	8
0800	80.0	190.0	240.0	275.0	31.0	285.0	M20	8
0900	90.0	240.0	300.0	340.0	31.0	295.0	M20	8
1000	100.0	240.0	300.0	340.0	31.0	295.0	M20	8
1100	110.0	275.0	320.0	355.0	45.0	330.0	M20	12
1200	120.0	275.0	320.0	355.0	45.0	330.0	M20	12
1300	130.0	270.0	340.0	380.0	45.0	350.0	M20	12
1400	140.0	313.0	350.0	385.0	45.0	315.0	M20	12
1500	150.0	313.0	350.0	385.0	45.0	315.0	M20	12

Dimensions for higher sizes available on request

LIMITING PARAMETERS

PRESSURE	TEMPERATURE	SPEED
FULL VACUUM TO 40 BAR *	- 40° C TO 200° C **	2 m/sec

* Special designs for higher pressures upto 150 bar

** For higher temperatures consult HI-FAB

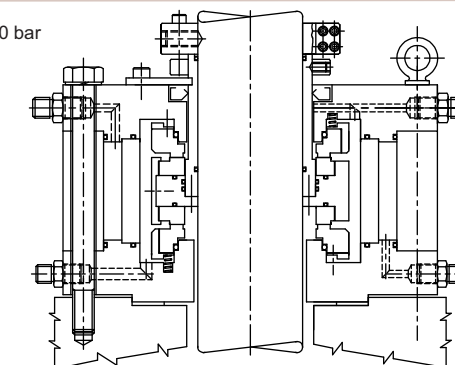
MATERIALS

METAL PARTS	FACE COMBINATIONS		SEAL TYPE	ELASTOMERS
	ROTARY	STATIONARY		
SS316	CARBON	SIC, TC	DHPDBT	PTFE
SPECIAL MOC ON REQUEST	SIC	SIC	DHPDB	VITON, FFKM EPR, AFLAS

Due to continuous improvement specifications & dimensions may change without prior notice

DESIGN VARIATIONS

Special design for higher pressures upto 150 bar



DHPDB-HP-F/F-HXXXJXS